

metrix blu·stone™ countertop basin

- Above-the-counter modern design with integral slot overflow & matching blu-stone™ waste cover
- Made of blu-stone™ providing the look and feel of natural stone
- Stronger and more durable than ceramic
- Non-porous, stain resistant surface that does not require sealing
- Does not promote bacteria, mold or fungi

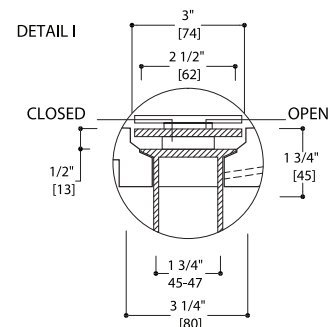
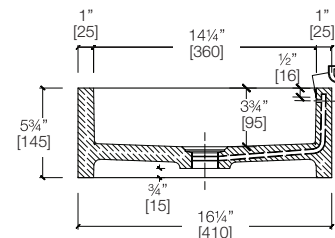
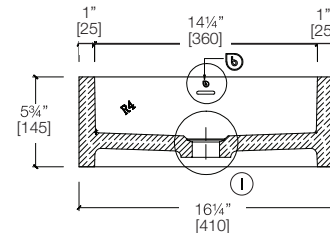
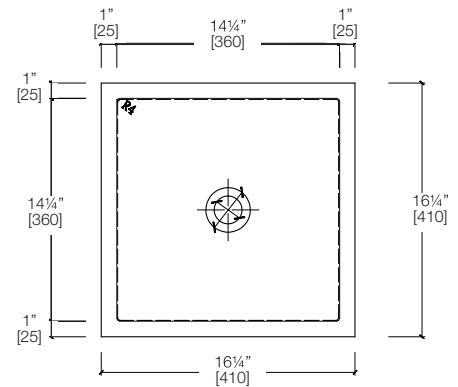
Drain hole:	Ø1¾" (Ø45mm)
Size:	16¼" x 16¼" (410mm x 410mm)*
Height:	5¾" (145mm)
Warranty:	Five Year Warranty (Residential use) One Year Warranty (Commercial use)
Material:	blu-stone™
Shipping Weight:	46 lbs (21kg)
Shipping Dimensions:	(LWH) 18" x 18" x 7¾" (460mm x 460mm x 195mm)

Gloss and embossed finishes & custom colors available (Tier 1/ Custom)

Recommend TW121 or TW121-S push button waste (sold separately)
 blu·stone™ waste cover included

Install this product according to the installation guide. Our products must be installed by certified professionals only and according to our installation guide as well as federal, provincial / state and local building codes and regulations. Product has an overflow. Spout must provide a minimum of 5" reach for adequate clearance into basin.

- ASME A112.19.2
- IAPMO / cUPC
- ICC / ANSI A117.1
- CSA B 45
- Fixture dimensions and hydraulic performance meet or exceed ANSI / ASME standard A112.19.2, A112.19.9M and CAN / CSA B 45 requirements.



Note: These dimensions and specifications are subject to change without notice.