



Model No: 1024U

1000 Series

MULTIMOUNT SINK

Product Specifications

www.oliverisinks.com

MATERIAL

Stainless Steel
304 Grade
16 Gauge

CONSTRUCTION

Fabricated basins welded together, sound deadening pads & undercoating

SHIPPING WEIGHT

(Packed)
24.0 lb

INSTALLATION METHOD

Designed to be Undermounted, Integrated or Top Mounted

CABINET

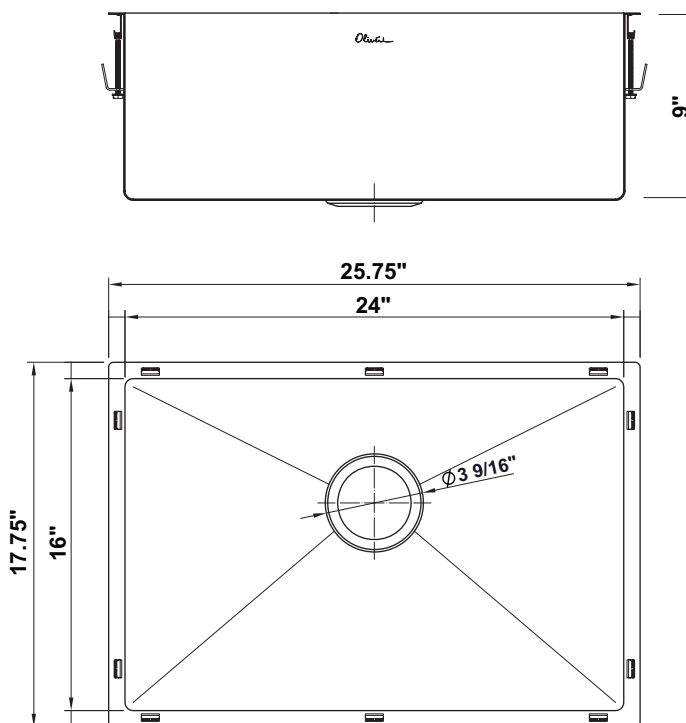
Minimum 27"
For Undermount,
Top Mount
or Integrated

WARRANTY

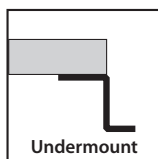
All Oliveri sinks carry
Tasman sinkware's
Lifetime Limited
Buyer Warranty



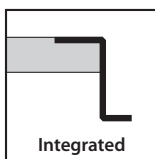
Model No: 1024U SINK DIMENSIONS



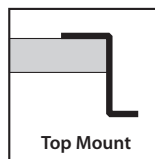
MOUNTING OPTIONS



Undermount



Integrated

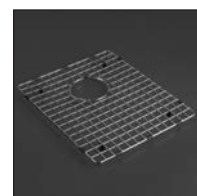


Top Mount

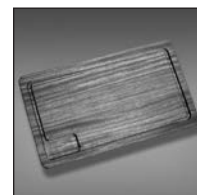
AVAILABLE ACCESSORIES



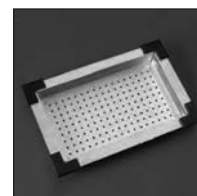
AC09 Basket
Waste x1



ACP104
Basin Protector



ACP126



ACP136

Undermount, top mount and integrated
CAD files (DXF & DWG format)
can be downloaded from
our web site www.oliverisinks.com

TASMAN

SINKWARE

Head Office and Manufacturing
Tasman Sinkware Pty Ltd
51 Naweena Rd. Regency Park
South Australia, 5010, AUSTRALIA
Tasman Sinkware

North America
1230 Railroad St
Corona CA 92882
northamerica@oliverisinks.com

Project / Customer Name: _____

Approval: _____

Date: _____



Model No: 1024UADA

Product Specifications

1000 Series

MULTIMOUNT SINK

www.oliverisinks.com

MATERIAL

Stainless Steel
304 Grade
16 Gauge

CONSTRUCTION

Fabricated basins welded together, sound deadening pads & undercoating

SHIPPING WEIGHT

(Packed)
24.0 lb

INSTALLATION METHOD

Designed to be Undermounted, Integrated or Top Mounted

CABINET

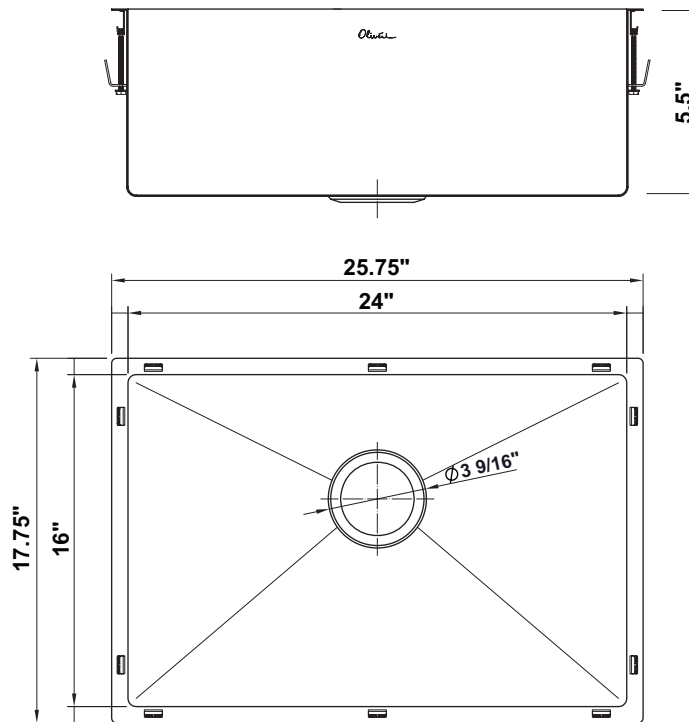
Minimum 27"
For Undermount,
Top Mount
or Integrated

WARRANTY

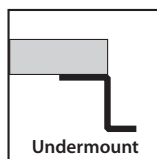
All Oliveri sinks carry
Tasman sinkware's
Lifetime Limited
Buyer Warranty



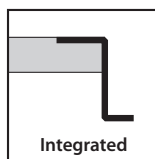
Model No: 1024UADA SINK DIMENSIONS



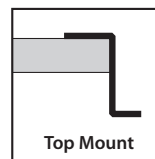
MOUNTING OPTIONS



Undermount



Integrated

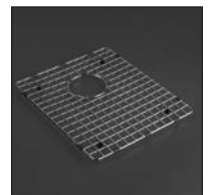


Top Mount

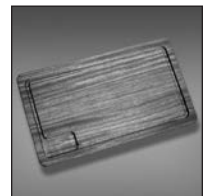
AVAILABLE ACCESSORIES



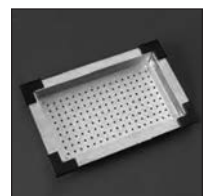
AC09 Basket
Waste x1



BP102
Basin Protector



ACP126



ACP136

Undermount, top mount and integrated
CAD files (DXF & DWG format)
can be downloaded from
our web site www.oliverisinks.com

TASMAN

SINKWARE

Head Office and Manufacturing
Tasman Sinkware Pty Ltd
51 Naweena Rd. Regency Park
South Australia, 5010, AUSTRALIA
Tasman Sinkware

North America
1230 Railroad St
Corona CA 92882
northamerica@oliverisinks.com

Project / Customer Name: _____

Approval: _____

Date: _____



Model No: 1063U

1000 Series

MULTIMOUNT SINK

Product Specifications

www.oliverisinks.com

MATERIAL

Stainless Steel
304 Grade
16 Gauge

CONSTRUCTION

Fabricated basins welded together, sound deadening pads & undercoating

SHIPPING WEIGHT

(Packed)
38.0 lb

INSTALLATION METHOD

Designed to be Undermounted, Integrated or Top Mounted

CABINET

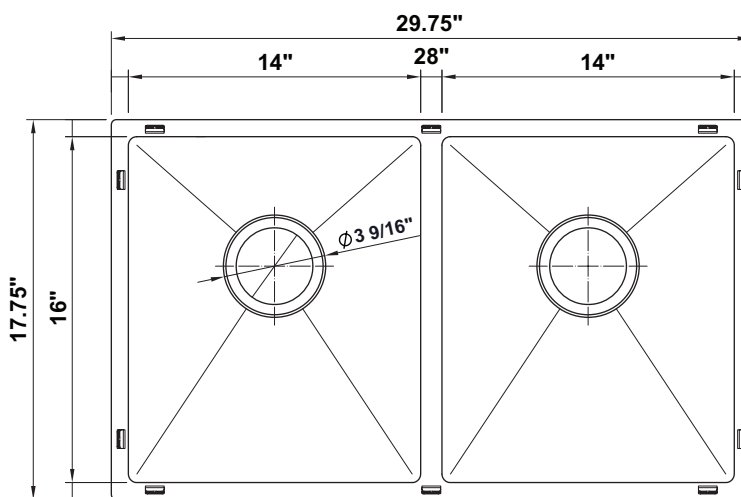
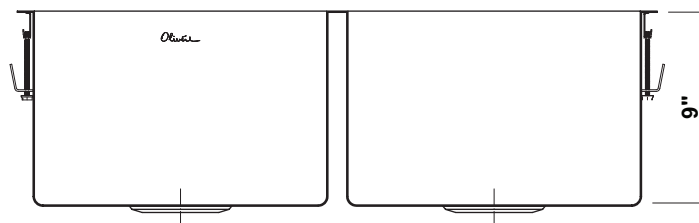
Minimum
33" Undermount
30" Top Mount or Integrated

WARRANTY

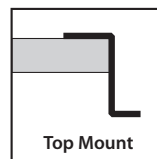
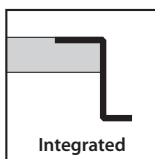
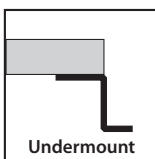
All Oliveri sinks carry Tasman sinkware's Lifetime Limited Buyer Warranty



Model No: 1063U SINK DIMENSIONS



MOUNTING OPTIONS

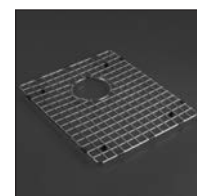


Undermount, top mount and integrated CAD files (DXF & DWG format) can be downloaded from our web site www.oliverisinks.com

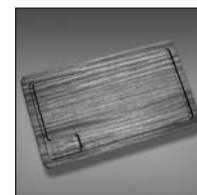
AVAILABLE ACCESSORIES



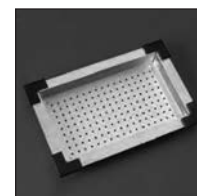
AC09 Basket Waste x1



BP106 Basin Protector



ACP126



ACP136

TASMAN

SINKWARE

Head Office and Manufacturing
Tasman Sinkware Pty Ltd
51 Naweena Rd. Regency Park
South Australia, 5010, AUSTRALIA
Tasman Sinkware

North America
1230 Railroad St
Corona CA 92882
northamerica@oliverisinks.com

Project / Customer Name: _____

Approval: _____

Date: _____



Model No: 1063UADA

Product Specifications

1000 Series

MULTIMOUNT SINK

www.oliverisinks.com

MATERIAL

Stainless Steel
304 Grade
16 Gauge

CONSTRUCTION

Fabricated basins welded together, sound deadening pads & undercoating

SHIPPING WEIGHT

(Packed)
38.0 lb

INSTALLATION METHOD

Designed to be Undermounted, Integrated or Top Mounted

CABINET

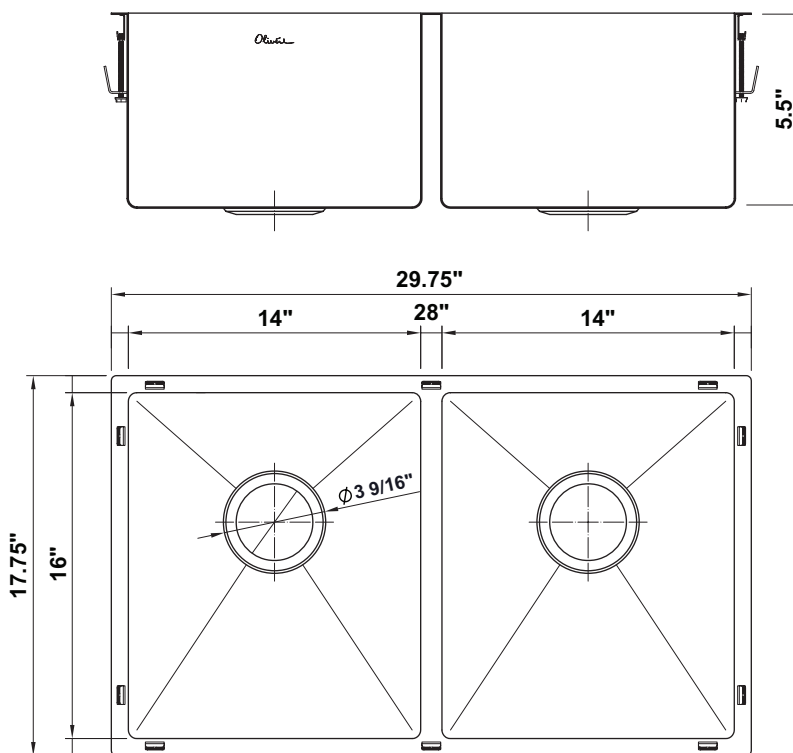
Minimum
33" Undermount
30" Top Mount or Integrated

WARRANTY

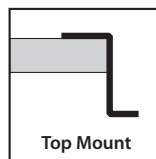
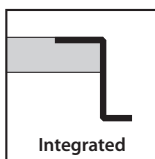
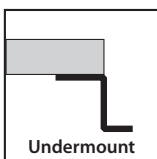
All Oliveri sinks carry Tasman sinkware's Lifetime Limited Buyer Warranty



Model No: 1063UADA SINK DIMENSIONS



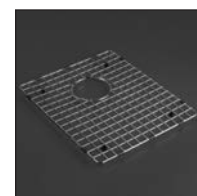
MOUNTING OPTIONS



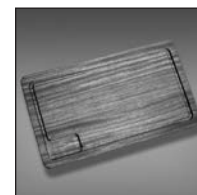
AVAILABLE ACCESSORIES



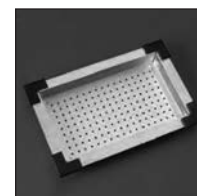
AC09 Basket Waste x1



BP106 Basin Protector



ACP126



ACP136

Undermount, top mount and integrated CAD files (DXF & DWG format) can be downloaded from our web site www.oliverisinks.com

TASMAN

SINKWARE

Head Office and Manufacturing
Tasman Sinkware Pty Ltd
51 Naweena Rd. Regency Park
South Australia, 5010, AUSTRALIA
Tasman Sinkware

North America
1230 Railroad St
Corona CA 92882
northamerica@oliverisinks.com

Project / Customer Name: _____

Approval: _____

Date: _____



Model No: 1090U

Product Specifications

1000 Series

MULTIMOUNT SINK

www.oliverisinks.com

MATERIAL

Stainless Steel
304 Grade
16 Gauge

CONSTRUCTION

Fabricated basins welded together, sound deadening pads & undercoating

SHIPPING WEIGHT

(Packed)
34.0 lb

INSTALLATION METHOD

Designed to be Undermounted, Integrated or Top Mounted

CABINET

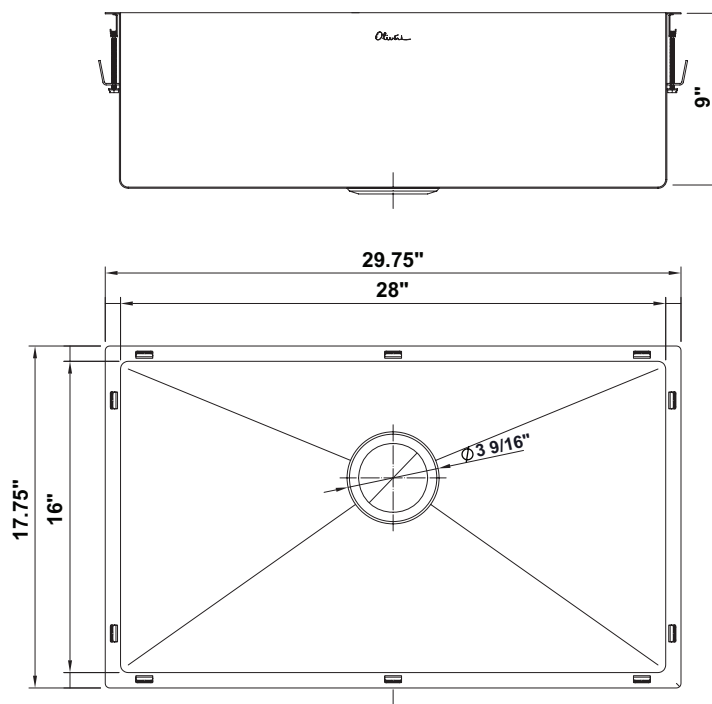
Minimum
33" Undermount
30" Top Mount or Integrated

WARRANTY

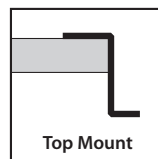
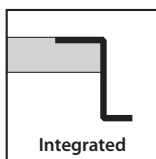
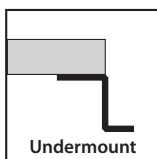
All Oliveri sinks carry Tasman sinkware's Lifetime Limited Buyer Warranty



Model No: 1090U SINK DIMENSIONS



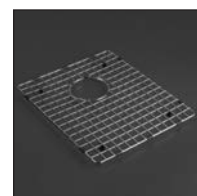
MOUNTING OPTIONS



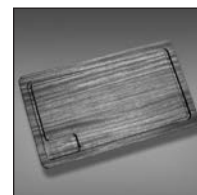
AVAILABLE ACCESSORIES



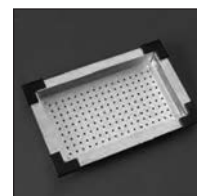
AC09 Basket
Waste x1



BP109
Basin Protector



ACP126



ACP136

Undermount, top mount and integrated CAD files (DXF & DWG format) can be downloaded from our web site www.oliverisinks.com

TASMAN

SINKWARE

Head Office and Manufacturing
Tasman Sinkware Pty Ltd
51 Naweena Rd. Regency Park
South Australia, 5010, AUSTRALIA
Tasman Sinkware

North America
1230 Railroad St
Corona CA 92882
northamerica@oliverisinks.com

Project / Customer Name: _____

Approval: _____

Date: _____



Model No: 1090UADA

Product Specifications

1000 Series

MULTIMOUNT SINK

www.oliverisinks.com

MATERIAL

Stainless Steel
304 Grade
16 Gauge

CONSTRUCTION

Fabricated basins welded together, sound deadening pads & undercoating

SHIPPING WEIGHT

(Packed)
34.0 lb

INSTALLATION METHOD

Designed to be Undermounted, Integrated or Top Mounted

CABINET

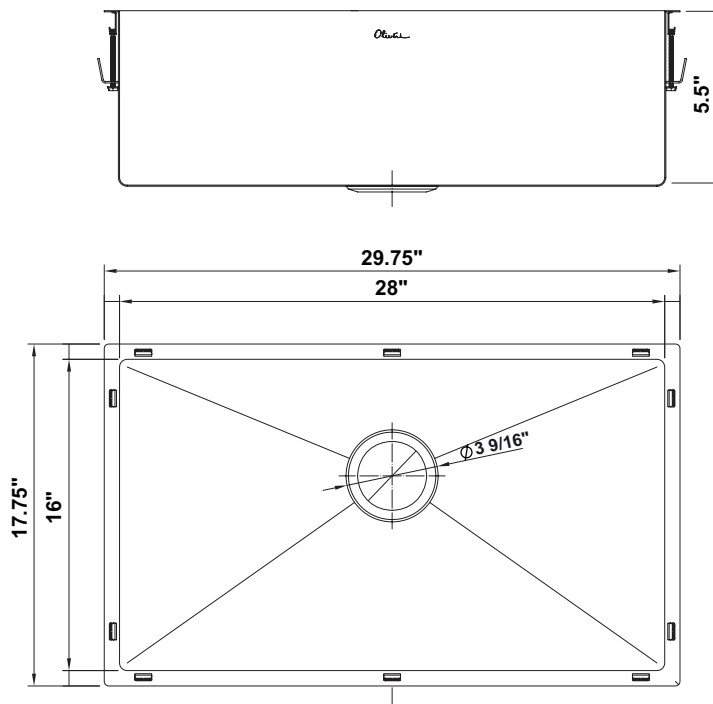
Minimum
33" Undermount
30" Top Mount or Integrated

WARRANTY

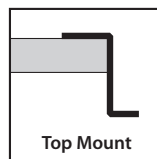
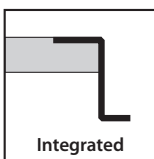
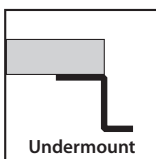
All Oliveri sinks carry Tasman sinkware's Lifetime Limited Buyer Warranty



Model No: 1090UADA SINK DIMENSIONS



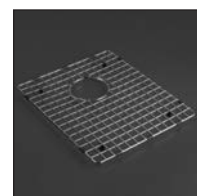
MOUNTING OPTIONS



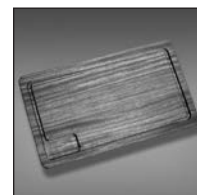
AVAILABLE ACCESSORIES



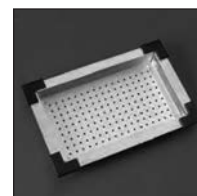
AC09 Basket
Waste x1



BP109
Basin Protector



ACP126



ACP136

Undermount, top mount and integrated CAD files (DXF & DWG format) can be downloaded from our web site www.oliverisinks.com

TASMAN

SINKWARE

Head Office and Manufacturing
Tasman Sinkware Pty Ltd
51 Naweena Rd. Regency Park
South Australia, 5010, AUSTRALIA
Tasman Sinkware

North America
1230 Railroad St
Corona CA 92882
northamerica@oliverisinks.com

Project / Customer Name: _____

Approval: _____

Date: _____